

## CHILI RUN AND FALL COLOR TOUR OCTOBER 18<sup>th</sup>, 2008

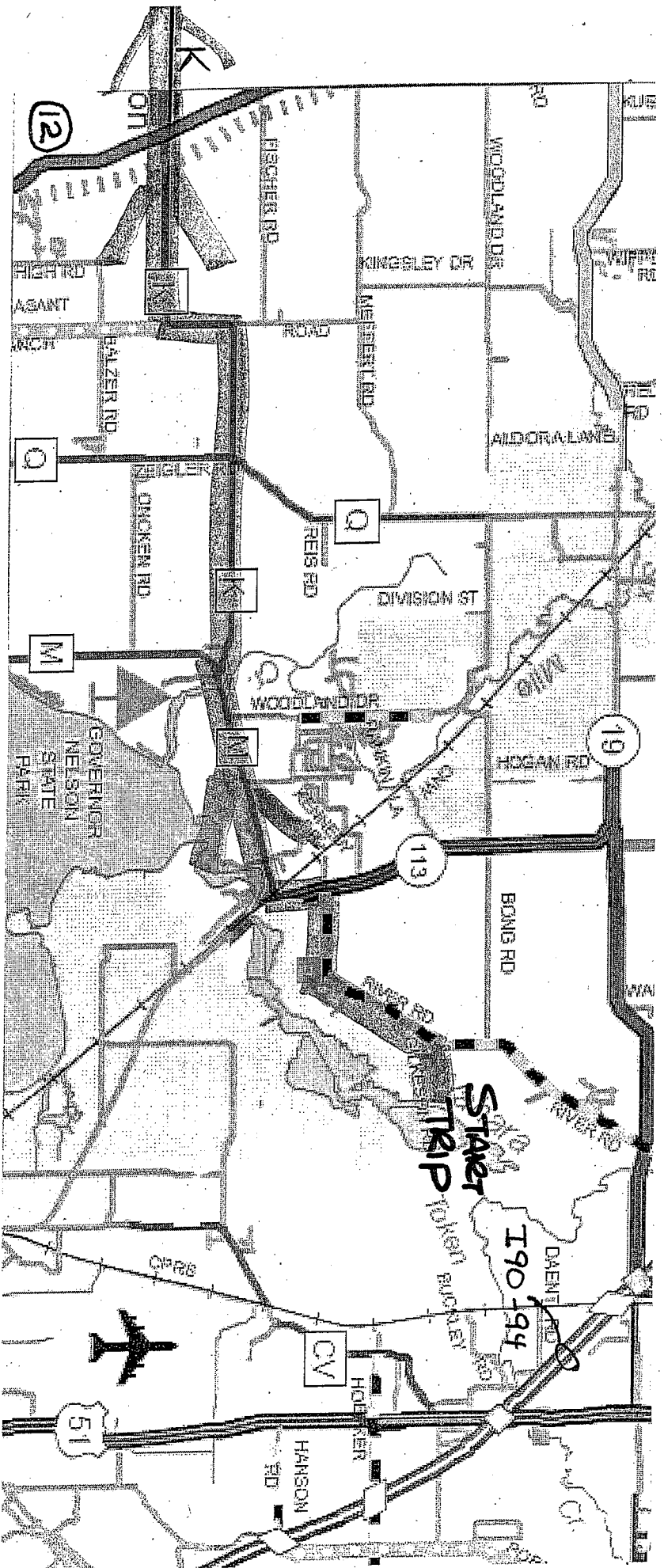
We will be leaving this afternoon after we finish our chili lunch, and we thank everybody that brought something for us to share today. We have at least one new member at our ride today, and we want to welcome Fred Beckmann from Waukesha to our club today. We have some simple instructions that should help our ride go smoothly this afternoon. We will be making our first stop in Spring Green at the Culvers on the corner of highway 14 and highway 23 after driving about 54 miles. Our second stop will be another 23 miles at the Weggy Winery for wine tasting, if we have enough interest from you folks this afternoon. If we have enough interest, we will split our group after a quick potty stop and the wine tasters will head off to the Weggy Winery and the others will take 30 minutes at Culvers and we will regroup at the winery, with everyone happy for different reasons. I will need some one to lead the Culver group, but there are only a few turns from Spring Green to the winery. After regrouping at Weggy's we will take a short ride back across the Wisconsin River to Muscoda and a quick potty stop, if anybody needs to stop before we head back east through Iowa County, returning to Benvenuto's for dinner.

### RULES OF THE ROAD THIS AFTERNOON;

1. CB radios on channel 5
2. Zero your trip indicator when we leave here, at Culvers in Spring Green and the south end of Muscoda, if you want to match our trip guide.
3. Turn your parking lights on and flash your headlights, if you have problems
4. Slower drivers should stay to the front of our group; we will follow all speed limits.
5. You are responsible for the car behind you, so at hidden turns or Y intersections make sure the car behind you is in view before you leave the intersection.
6. Benvenuto's Italian Grill is our stop after the run is complete, could we please get a total number of people staying for dinner this evening.
7. Dave and Lynn are leading today and their cell phone is 608-358-6275
8. Let's have a fun and safe outing this afternoon.

### RETURNING HOME AFTER OUR OUTING-

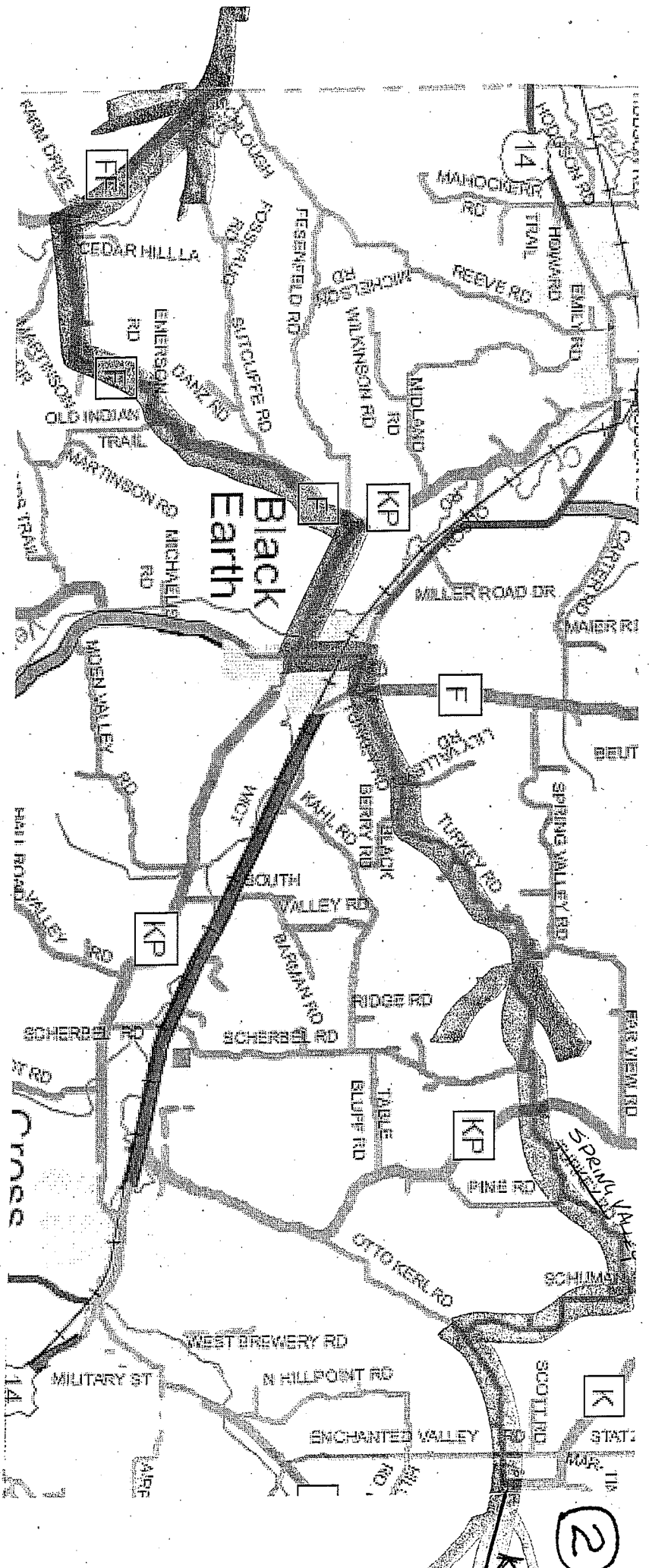
We will end our tour in the parking lot of Benvenuto's Italian Grill on highway 113 in Madison, to return to the Interstate, take 113 south about 1 mile to highway 30 - Aberg Avenue, exit to the right from 113 and turn left at the stoplight on the ramp and you'll be headed east toward the Interstate highways. If you know you want to drive north from Benvenuto's, exit the parking lot and get into the left lane and turn north (left) on county highway CV, this county road will connect with highway 51 near the interstate north of Madison. Thank you for coming today and have a safe trip home.



# WESTPORT TO SPRING GREEN

①

ODOMETER TOTAL →	ODO	TURN	ONTO ROAD	FOR	MILES ON THIS SECTION OF TRIP
0	0		955 GILKESON ROAD	0.2	0.2
0.2	0.2	└	RIVER ROAD	1.6	1.6
1.8	1.8	└	HWY 113 SOUTH	0.6	0.6
2.2	2.2	R	CTY M WEST	1.8	1.8
4.0	4.0	R	CTY K WEST	10	10
8.6	8.6	S	STOP LIGHT HWY 12 + CTY K	1	1



# ODOMETER TOTALS

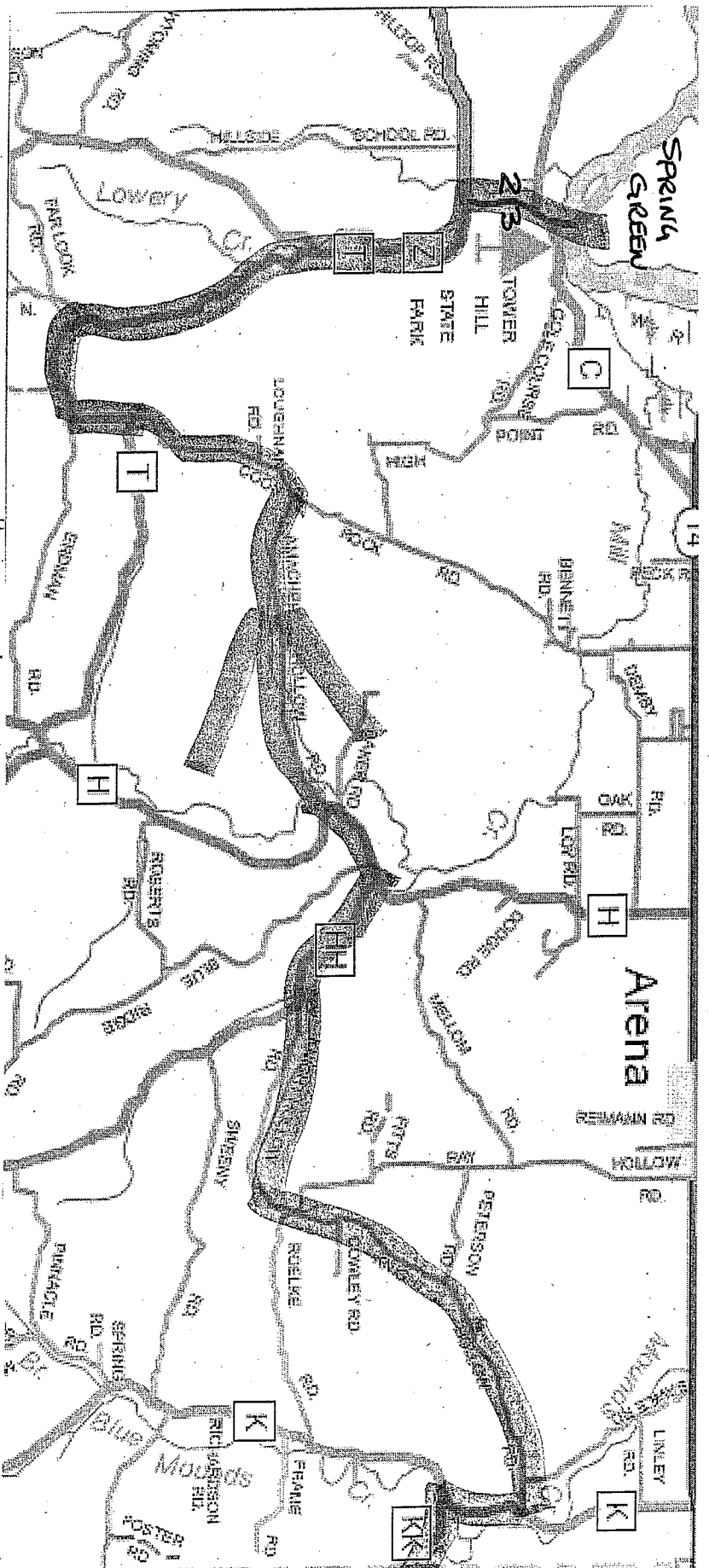
14.0	└
15.3	└
17.0	└
19.3	└
20.2	└
23.1	└
23.3	└
23.6	└
24.2	└
25.3	└
29.7	└

OTTO KERL ROAD WEST
SCHUMAN ROAD NORTH
SPRING VALLEY ROAD WEST
SPRING VALLEY ROAD WEST
TURKEY ROAD WEST
CTY F SOUTH THRU BLACK EARTH
CTY F AND HULLY WEST
CTY F AND HAY 78 SOUTH
CTY F AND CTY KP WEST
CTY F SOUTH
CTY FF

1.3
2.7
2.3
0.9
2.9
0.2
0.3
0.6
1.1
4.1
1.5

## MILES ON THIS SECTION OF TRIP

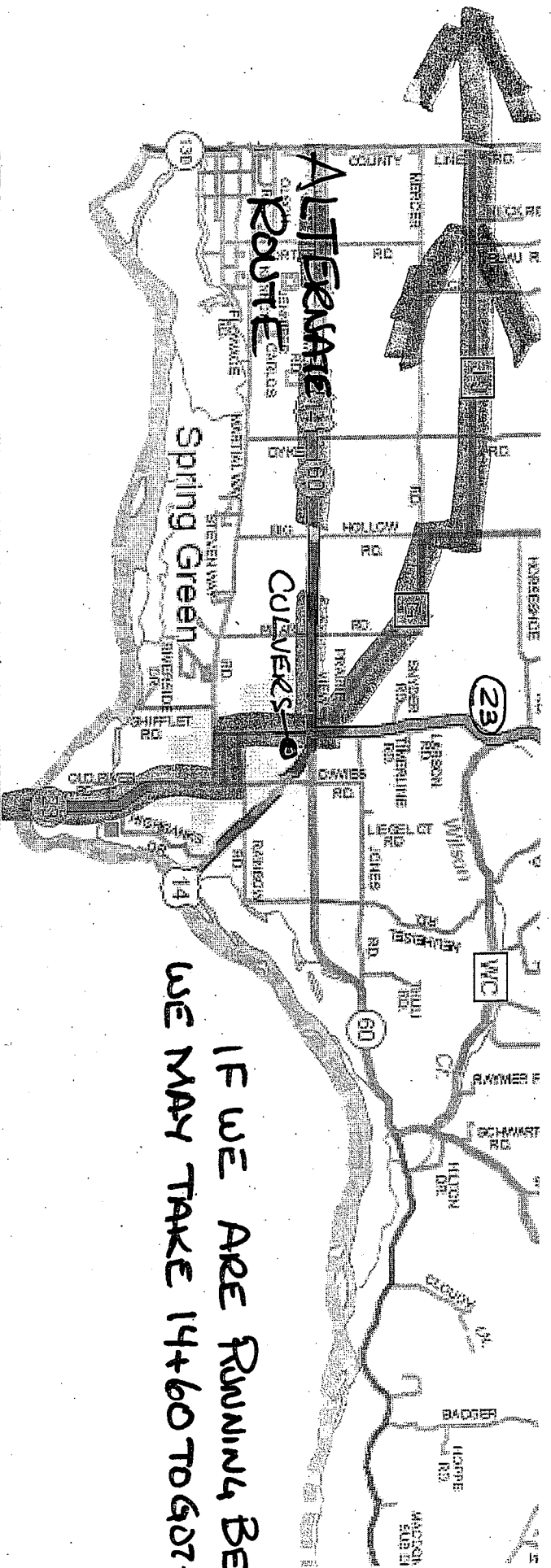
From Turkey Road Follow County "F" Through Black Earth



ODOMETER  
TOTALS

30.9	R	CTY FF CHANGES TO KK	0.9
31.8	R	CTY K NORTH	0.7
32.5	L	KNIGHT HOLLOW ROAD	5.8
38.3	R	CTY HH NOT MARKED	1.2
39.5	L	CTY H SOUTH	0.9
40.1	R	AMATTER HOLLOW ROAD	2.9
43.3	L	COON ROCK ROAD	1.6
44.9		STRAIGHT ON CTY T	5.3
50.2	R	HWY 23 NORTH	2.9

MILES  
ON EACH ROAD



IF WE ARE RUNNING BEHIND  
WE MAY TAKE 14+60 TO GOTHAM

# ODOMETER TOTALS

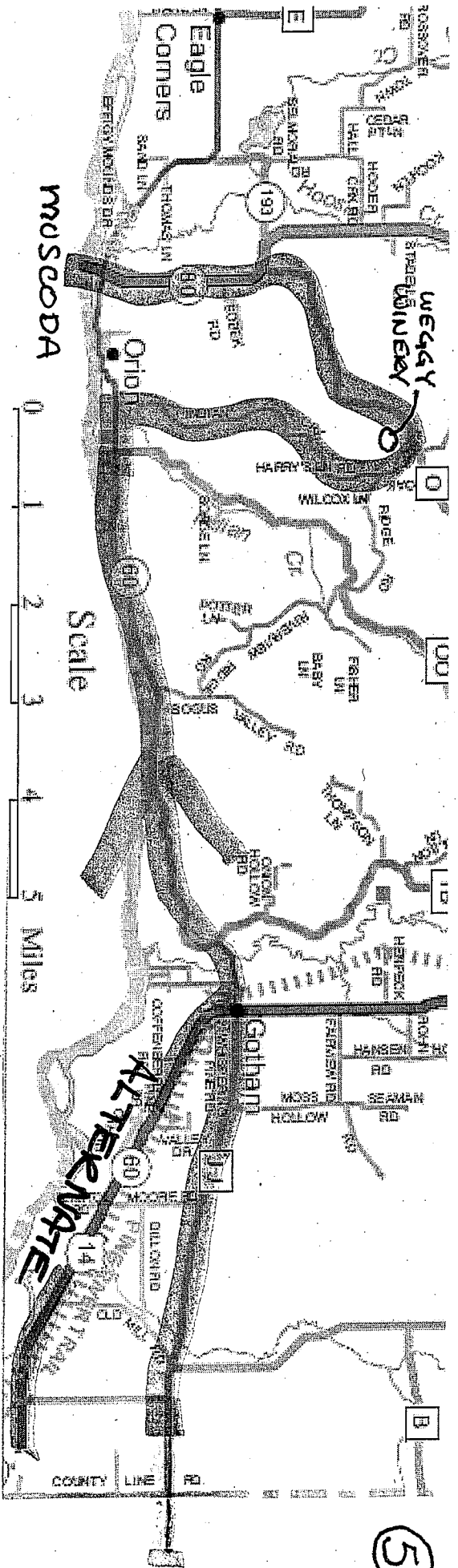
53.3	L	JEFFERSON ST. WEST	0.5
53.8	R	WOOD ST NORTH	0.2
54.6	R	CULVERS CUSTARD + GAS	

WE WILL HAVE A BREAK AT THE CULVERS IN SPRING GREEN. PEOPLE THAT WANT TO TASTE WINES AT THE WEGGY WINERY WILL LEAVE BEFORE THE MAIN GROUP. WE WILL ALL REGROUP AT WEGGY!

SPRING GREEN TO MUSCODA

# "O" ZERO ODOMETER AT CULVERS

ODOTUN	ONTO	FOR
LEAVE CULVERS AND DRIVE NORTH ON		
Hwy 23 CROSSING Hwy 14		
0.2 L	CTY G (BLUE FLOODING ON LEFT)	2.3
3.0 L	CTY JJ WEST TO GOTHAM	9.2



ZERO ODOMETER AT SOUTH END OF MUSCODA  
THERE ARE TWO GAS STATIONS + A PARK FOR BREAKS

ODOMETER  
TOTALS

12.2  
19.0  
23.0  
26.5  
28.1

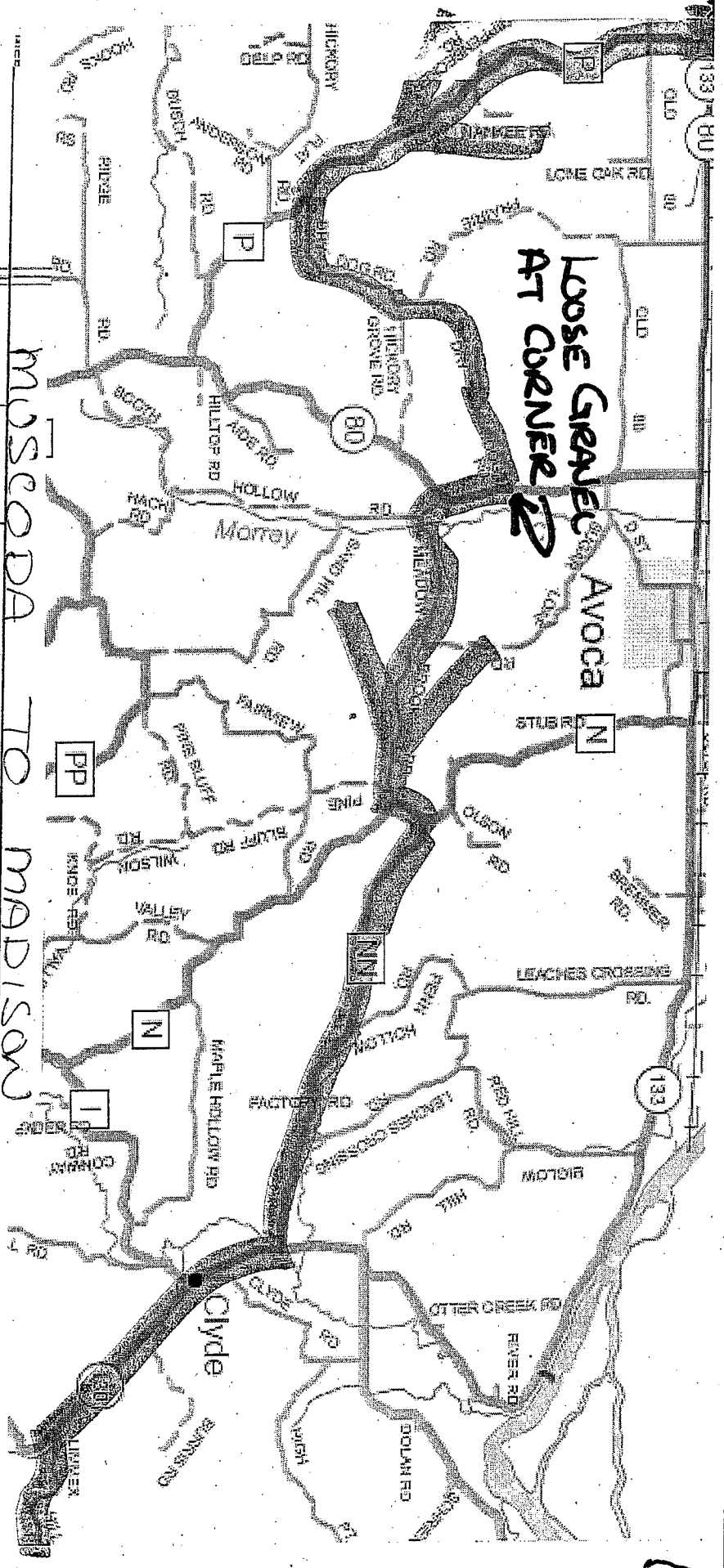
R

L

Cross Hwy 14 to Hwy 60 West  
REGROUP IN GOTHAM  
INDIAN CREEK ROAD  
WEGGY WINERY  
CTY "O" SOUTH  
Hwy 80 South  
Hwy 80 Cross Hwy 60  
INTO MUSCODA FOR POTTY  
STOP IF NEEDED  
SPEEDOMETER AT SOUTH  
END OF MUSCODA

6.8 MILES  
ON  
EACH  
ROAD

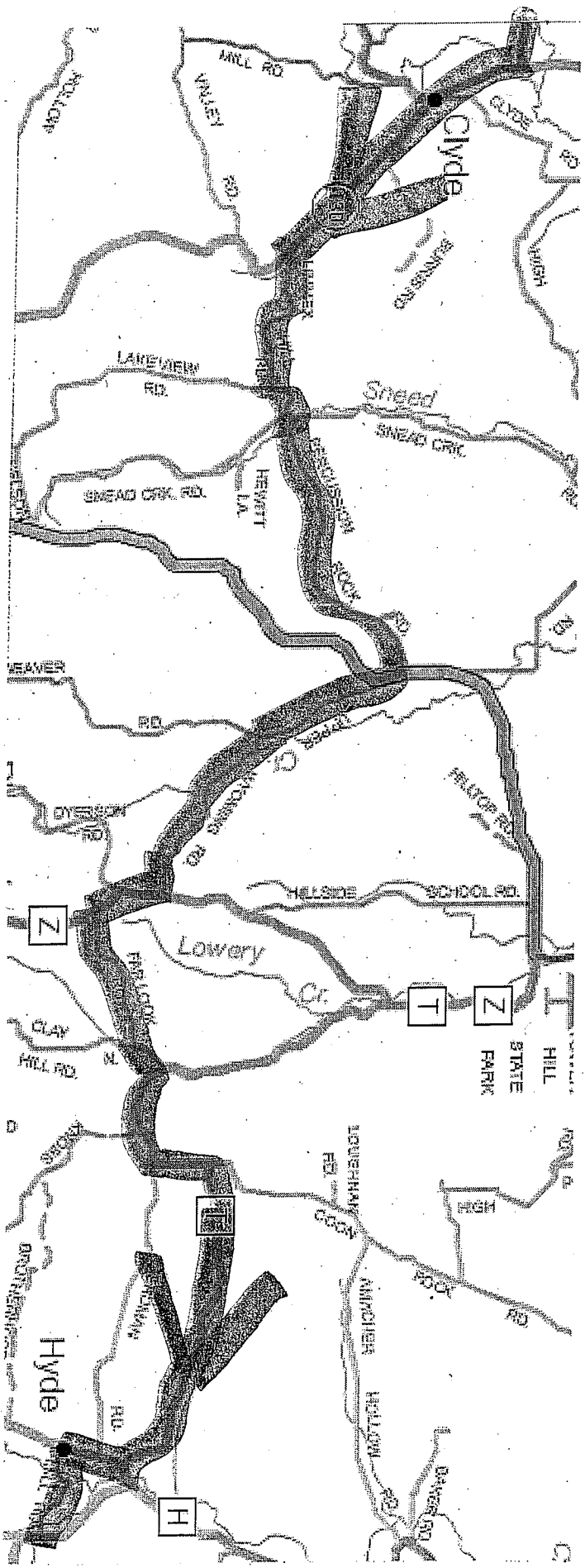
3.5  
1.6



MOSCO, NY TO MADISON, NY

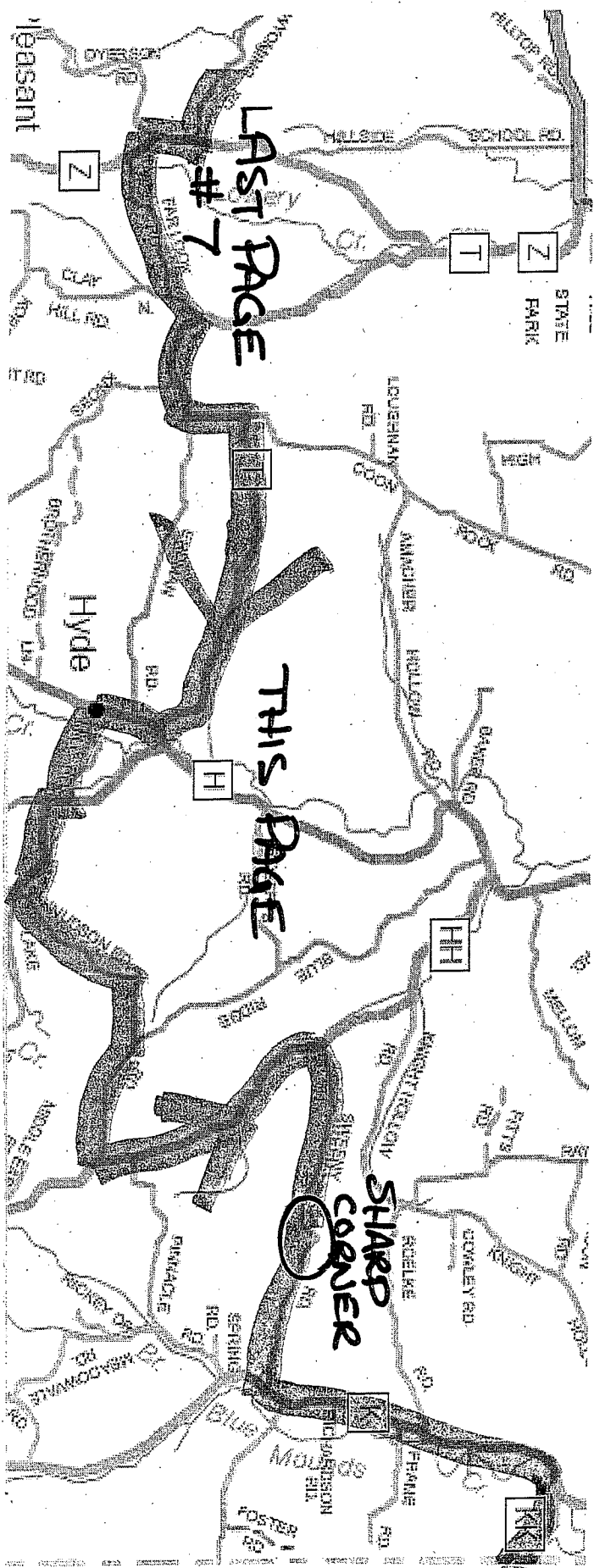
ODOMETER TOTALS	ODO	TURN	ONTO	FOR	MILES ON EACH ROAD
0.0	0.0	✓	Hwy 80 South	0.9	
0.9	0.9	✓	Cty P South	4.0	
4.9	4.9	✓	Dry Dock Road 40 MPH	3.9	
8.8	8.8	✓	Loose Gravel AT intersection	0.5	
9.3	9.3	✓	Hwy 80 South	0.3	
9.6	9.6	✓	Booth Hollow Road	2.7	
12.3	12.3	✓	Meadow Brook Road	0.3	
12.6	12.6	✓	Cty N NOT MARKED	4.2	
16.8	16.8	✓	Hwy 130 South	2.6	





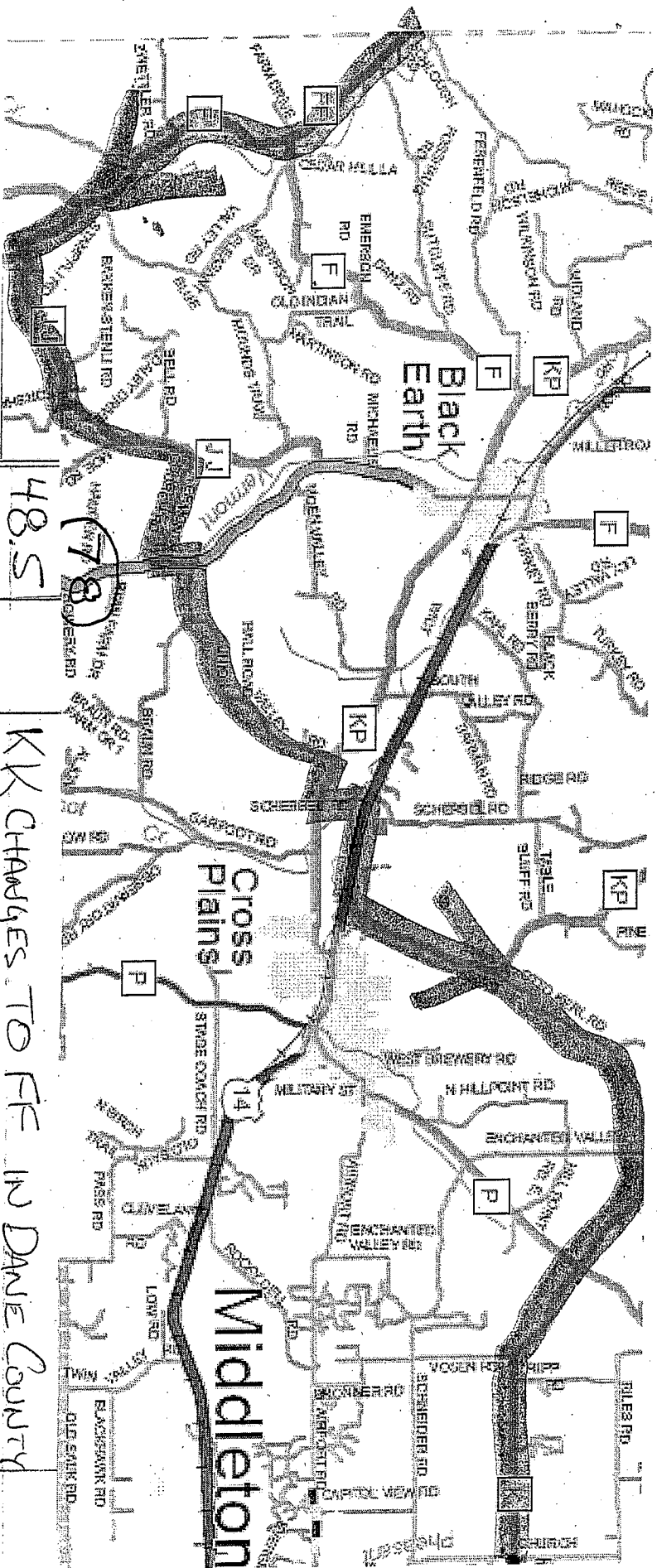
ODOMETER			MILES
TOTAL			ON EACH ROAD
19.4	L	LIMMER HILL ROAD	1.4
20.8	L	LAKEVIEW ROAD	0.4
21.2	R	PERCUSSION ROCK ROAD	2.7
23.9	R	Hwy 23 (1/2 Block) SOUTH	0.1
24.0	L	UPPER WYOMING	1.3
25.3	L	UPPER WYOMING	1.8
27.1	R	CTY Z SOUTH	0.5
27.6	L	FAIR LOOK ROAD	1.7
29.3	R	CTY T	4.5





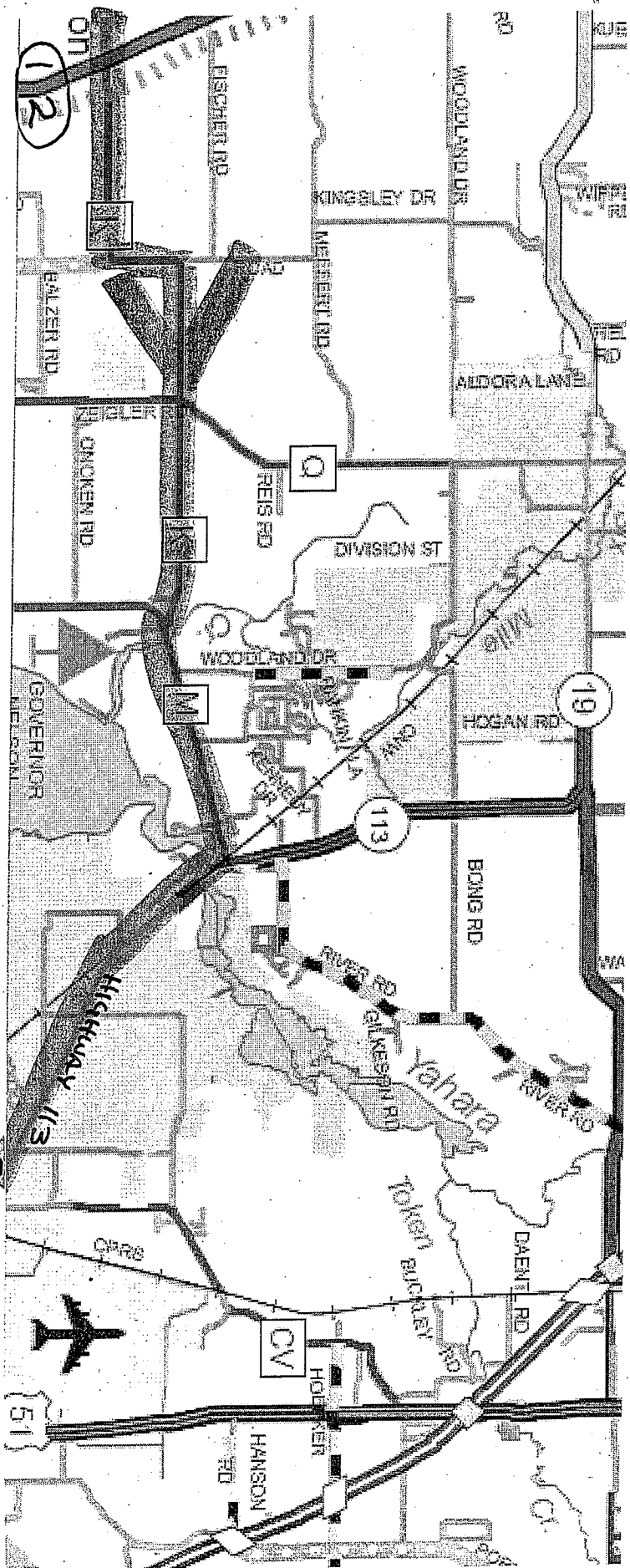
ODOMETER  
TOTALS

		MILES ON EACH ROAD
33.8	R	0.6
34.4	L	0.9
35.3	R	1.0
36.3	L	2.0
38.3	R	0.9
39.4	L	2.3
41.7	R	3.2
44.9	L	2.8
47.7	R	0.8



# ODometer TOTALS

48.5	KK CHANGES TO FF IN DANE COUNTY	
50.1	GO STRAIGHT ON CTY F	1.5
52.5	CTY J AND JJ	0.8
53.3	CTY JJ	3.2
56.5	VERMONT CHURCH ROAD	1.1
57.6	HYD 78 NORTH	0.3
57.9	UNION VALLEY ROAD	2.9
60.8	CTY KP EAST	0.4
61.2	SCHBEL ROAD NORTH	0.5
61.7	HYD 14 EAST 1 MILE ONLY	1
62.7	CTY KP NORTH	1.7
64.4	OTTO KEE	2.9
67.3	CTY K EAST	9.9



BEVENUOTO'S  
ITALIAN GRILL

WE WILL FOLLOW COUNTY "K" FOR 10 MILES TOTAL

72.6	STOP LITE ATTNEY 12 MOBIL GAS
77.2	CTY M EAST
79	1.8
81.9	4
	BEVENUOTO'S RESTAURANT

ODOMETER  
TOTALS